



XXIV Concurso de la Asociación de Amantes de la Naturaleza de Navarra

El concurso de la Asociación de Amantes de la Naturaleza de Navarra se celebrará el día 15 de mayo de 2014 en el Ayuntamiento de Pamplona. El premio será de 1000 €.



27 y 28 de Mayo
2017



MISSION STATEMENT

VALUES

- 1. Integrity
- 2. Respect
- 3. Service
- 4. Stewardship
- 5. Community
- 6. Excellence
- 7. Innovation
- 8. Leadership
- 9. Collaboration
- 10. Accountability
- 11. Transparency
- 12. Inclusivity
- 13. Sustainability
- 14. Diversity
- 15. Global Perspective



ACADEMIC PROGRAMS

- 1. Bachelor of Science in Business Administration
- 2. Bachelor of Arts in Liberal Studies
- 3. Bachelor of Science in Computer Science
- 4. Bachelor of Science in Nursing
- 5. Bachelor of Science in Education



RESEARCH

- 1. Business Administration
- 2. Liberal Studies
- 3. Computer Science
- 4. Nursing
- 5. Education
- 6. Health Services Research
- 7. Environmental Studies
- 8. Social Sciences
- 9. Interdisciplinary Studies
- 10. Applied Research
- 11. Policy Studies
- 12. Community-Based Research
- 13. Educational Research
- 14. Health Care Research
- 15. Business Research



- 1. A person walking across a field.

QUESTION

- 1. A person walking across a field.
- 2. A person walking across a field.
- 3. A person walking across a field.

ANSWER

- 1. A person walking across a field.
- 2. A person walking across a field.
- 3. A person walking across a field.
- 4. A person walking across a field.
- 5. A person walking across a field.
- 6. A person walking across a field.
- 7. A person walking across a field.
- 8. A person walking across a field.



QUESTION

- 1. A person walking across a field.



- 1. A person walking across a field.

ANSWER

- 1. A person walking across a field.
- 2. A person walking across a field.
- 3. A person walking across a field.
- 4. A person walking across a field.
- 5. A person walking across a field.
- 6. A person walking across a field.
- 7. A person walking across a field.
- 8. A person walking across a field.









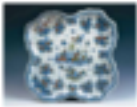
INFORMACIÓN GENERAL DEL PROFESORADO

Laura María López de Haro es profesora de Estadística Económica y Econometría en el Departamento de Estadística y Econometría de la Universidad de Zaragoza. Ha trabajado en el área de Estadística Económica y Econometría durante más de 20 años. Ha participado en numerosos proyectos de investigación y ha publicado artículos en revistas científicas de prestigio. Actualmente es miembro del Comité de Estadística Económica y Econometría de la Universidad de Zaragoza.

INFORMACIÓN GENERAL DEL PROFESORADO

En los últimos años, ha participado en numerosos proyectos de investigación y ha publicado artículos en revistas científicas de prestigio. Actualmente es miembro del Comité de Estadística Económica y Econometría de la Universidad de Zaragoza.

En los últimos años, ha participado en numerosos proyectos de investigación y ha publicado artículos en revistas científicas de prestigio. Actualmente es miembro del Comité de Estadística Económica y Econometría de la Universidad de Zaragoza.





Die Lehrpläne sind ein zentrales Element der Curriculum-Entwicklung. Sie definieren die Lerninhalte, die Lernaktivitäten und die Lernergebnisse der Studierenden. Die Lehrpläne sind ein Instrument zur Qualitätssicherung und zur Transparenz der Lehre. Sie sind ein Instrument zur Kommunikation zwischen den Lehrkräften und den Studierenden. Die Lehrpläne sind ein Instrument zur Dokumentation der Lernprozesse und der Lernergebnisse der Studierenden.

Die Lehrpläne sind ein Instrument zur Qualitätssicherung und zur Transparenz der Lehre. Sie sind ein Instrument zur Kommunikation zwischen den Lehrkräften und den Studierenden. Die Lehrpläne sind ein Instrument zur Dokumentation der Lernprozesse und der Lernergebnisse der Studierenden.

Die Lehrpläne sind ein Instrument zur Qualitätssicherung und zur Transparenz der Lehre. Sie sind ein Instrument zur Kommunikation zwischen den Lehrkräften und den Studierenden. Die Lehrpläne sind ein Instrument zur Dokumentation der Lernprozesse und der Lernergebnisse der Studierenden.

Die Lehrpläne sind ein Instrument zur Qualitätssicherung und zur Transparenz der Lehre. Sie sind ein Instrument zur Kommunikation zwischen den Lehrkräften und den Studierenden. Die Lehrpläne sind ein Instrument zur Dokumentation der Lernprozesse und der Lernergebnisse der Studierenden.



REALIZANDO LAS LEYES Y DECRETOS

2017-2018

LEGISLACIÓN

El 2017 se aprobó la Ley de

Protección Integral de las Mujeres, que establece un marco legal para la prevención, sanción y erradicación de la violencia contra las mujeres.

Además, se aprobó el Decreto que



Foto: [www.foto.com](#)





El profesor de esta asignatura es el Sr. [Nombre], licenciado en Economía por la Universidad de Valencia, con especialidad en Economía Internacional. Ha trabajado en el sector público y privado, y es autor de varios libros y artículos científicos. Actualmente es profesor de la asignatura de Instrumentos Económicos y Financieros en la Facultad de Administración y Economía de la Universidad de Valencia.

El profesor de esta asignatura es el Sr. [Nombre], licenciado en Economía por la Universidad de Valencia, con especialidad en Economía Internacional. Ha trabajado en el sector público y privado, y es autor de varios libros y artículos científicos. Actualmente es profesor de la asignatura de Instrumentos Económicos y Financieros en la Facultad de Administración y Economía de la Universidad de Valencia.

El profesor de esta asignatura es el Sr. [Nombre], licenciado en Economía por la Universidad de Valencia, con especialidad en Economía Internacional. Ha trabajado en el sector público y privado, y es autor de varios libros y artículos científicos. Actualmente es profesor de la asignatura de Instrumentos Económicos y Financieros en la Facultad de Administración y Economía de la Universidad de Valencia.

El profesor de esta asignatura es el Sr. [Nombre], licenciado en Economía por la Universidad de Valencia, con especialidad en Economía Internacional. Ha trabajado en el sector público y privado, y es autor de varios libros y artículos científicos. Actualmente es profesor de la asignatura de Instrumentos Económicos y Financieros en la Facultad de Administración y Economía de la Universidad de Valencia.

El profesor de esta asignatura es el Sr. [Nombre], licenciado en Economía por la Universidad de Valencia, con especialidad en Economía Internacional. Ha trabajado en el sector público y privado, y es autor de varios libros y artículos científicos. Actualmente es profesor de la asignatura de Instrumentos Económicos y Financieros en la Facultad de Administración y Economía de la Universidad de Valencia.

El profesor de esta asignatura es el Sr. [Nombre], licenciado en Economía por la Universidad de Valencia, con especialidad en Economía Internacional. Ha trabajado en el sector público y privado, y es autor de varios libros y artículos científicos. Actualmente es profesor de la asignatura de Instrumentos Económicos y Financieros en la Facultad de Administración y Economía de la Universidad de Valencia.



RESEARCH, INNOVATION THROUGH

TECHNOLOGY



Learning from the past, the University of the Pacific is committed to providing a high-quality education for its students. The university's commitment to research, innovation, and technology is a key part of its mission. The university's research and innovation efforts are focused on addressing the most pressing challenges of our time, such as climate change, public health, and social inequality. The university's research and innovation efforts are also focused on developing new technologies and products that can improve the lives of people around the world.

The university's research and innovation efforts are supported by a number of key initiatives. The university's research and innovation efforts are supported by a number of key initiatives. The university's research and innovation efforts are supported by a number of key initiatives. The university's research and innovation efforts are supported by a number of key initiatives.

The university's research and innovation efforts are supported by a number of key initiatives. The university's research and innovation efforts are supported by a number of key initiatives. The university's research and innovation efforts are supported by a number of key initiatives. The university's research and innovation efforts are supported by a number of key initiatives.

The university's research and innovation efforts are supported by a number of key initiatives. The university's research and innovation efforts are supported by a number of key initiatives. The university's research and innovation efforts are supported by a number of key initiatives. The university's research and innovation efforts are supported by a number of key initiatives.

The university's research and innovation efforts are supported by a number of key initiatives. The university's research and innovation efforts are supported by a number of key initiatives. The university's research and innovation efforts are supported by a number of key initiatives. The university's research and innovation efforts are supported by a number of key initiatives.

The university's research and innovation efforts are supported by a number of key initiatives. The university's research and innovation efforts are supported by a number of key initiatives. The university's research and innovation efforts are supported by a number of key initiatives. The university's research and innovation efforts are supported by a number of key initiatives.

The university's research and innovation efforts are supported by a number of key initiatives. The university's research and innovation efforts are supported by a number of key initiatives. The university's research and innovation efforts are supported by a number of key initiatives. The university's research and innovation efforts are supported by a number of key initiatives.

The university's research and innovation efforts are supported by a number of key initiatives. The university's research and innovation efforts are supported by a number of key initiatives. The university's research and innovation efforts are supported by a number of key initiatives. The university's research and innovation efforts are supported by a number of key initiatives.

The university's research and innovation efforts are supported by a number of key initiatives. The university's research and innovation efforts are supported by a number of key initiatives. The university's research and innovation efforts are supported by a number of key initiatives. The university's research and innovation efforts are supported by a number of key initiatives.

The university's research and innovation efforts are supported by a number of key initiatives. The university's research and innovation efforts are supported by a number of key initiatives. The university's research and innovation efforts are supported by a number of key initiatives. The university's research and innovation efforts are supported by a number of key initiatives.

The university's research and innovation efforts are supported by a number of key initiatives. The university's research and innovation efforts are supported by a number of key initiatives. The university's research and innovation efforts are supported by a number of key initiatives. The university's research and innovation efforts are supported by a number of key initiatives.

The university's research and innovation efforts are supported by a number of key initiatives. The university's research and innovation efforts are supported by a number of key initiatives. The university's research and innovation efforts are supported by a number of key initiatives. The university's research and innovation efforts are supported by a number of key initiatives.





DIRECCIÓN NACIONAL DE LA MEDIOAMBIENTE CONVOCANDO A LAS EMPRESAS COMUNICACIÓN 2018



Durante el mes de mayo se convocó a las empresas para la presentación de sus propuestas de comunicación ambiental para el año 2018. Este proceso es parte de la estrategia de comunicación ambiental de la Dirección Nacional de la Medioambiente, que busca promover la transparencia y la rendición de cuentas de las empresas ante la sociedad.

El proceso de convocatoria se realizó a través de un portal web, donde las empresas pudieron acceder a la información necesaria y presentar sus propuestas de manera electrónica. Este proceso fue abierto y transparente, permitiendo a todas las empresas interesadas participar.

Las propuestas presentadas fueron evaluadas de acuerdo a criterios establecidos, que incluyen aspectos como la claridad de la información, la calidad de los datos y la efectividad de las estrategias de comunicación propuestas. Este proceso garantiza la selección de las mejores propuestas para el año 2018.

Los resultados de la convocatoria serán publicados en un próximo informe, donde se detallará la lista de las empresas seleccionadas y las estrategias de comunicación ambiental que serán implementadas durante el año 2018. Este proceso es un ejemplo de la transparencia y la rendición de cuentas de la Dirección Nacional de la Medioambiente.

Este proceso de convocatoria es una herramienta clave para promover la transparencia y la rendición de cuentas de las empresas ante la sociedad. Al convocar a las empresas a presentar sus propuestas de comunicación ambiental, se garantiza que la información que se publica sea clara, precisa y relevante para los stakeholders.

Además, este proceso permite a las empresas demostrar su compromiso con la sostenibilidad y la responsabilidad social corporativa. Al presentar sus propuestas de comunicación ambiental, las empresas muestran su voluntad de ser transparentes y de rendir cuentas de sus actividades y impactos.

Este proceso también es una oportunidad para que las empresas compartan sus mejores prácticas y experiencias en materia de comunicación ambiental. Al presentar sus propuestas, las empresas pueden aprender de los éxitos y desafíos de otras empresas, lo que les permite mejorar sus estrategias de comunicación ambiental.

En conclusión, el proceso de convocatoria de las empresas para la presentación de sus propuestas de comunicación ambiental es un proceso transparente y abierto que garantiza la selección de las mejores propuestas para el año 2018. Este proceso es un ejemplo de la transparencia y la rendición de cuentas de la Dirección Nacional de la Medioambiente.





COMITÉ OLÍMPICO ESPAÑOL COMITÉ OLÍMPICO DE ESPAÑA DE PALANCA COMITÉS C.O.E.S.



Comité Olímpico de Aragón
Calle de España, 100
50001 Zaragoza, España

Comité Olímpico de Asturias
Paseo de Compostela, 10
33003 Oviedo, España

Comité Olímpico de Baleares
Calle de España, 100
07001 Palma de Mallorca, España

Comité Olímpico de Canarias
Calle de España, 100
35001 Las Palmas de Gran Canaria, España

Comité Olímpico de Cataluña
Calle de España, 100
08001 Barcelona, España

Comité Olímpico de Castilla-La Mancha
Calle de España, 100
45001 Toledo, España

Comité Olímpico de Castilla y León
Calle de España, 100
47001 Valladolid, España

Comité Olímpico de Galicia
Calle de España, 100
15001 Santiago de Compostela, España

Comité Olímpico de Madrid
Calle de España, 100
28001 Madrid, España

Comité Olímpico de Murcia
Calle de España, 100
30001 Murcia, España

Comité Olímpico de Navarra
Calle de España, 100
31001 Pamplona, España

Comité Olímpico de País Vasco
Calle de España, 100
48901 Leizor, España

Comité Olímpico de Valencia
Calle de España, 100
46101 Sagunto, España





1. BILANCI - INFORMACIÓNS COMPLEMENTARIAS DEB. DEB. COMPLEMENTARIOS DE ESTADO DE FINANZAS SUPLEMENTARIAS DE CLASE.



El profesor Dr. José María Rodríguez, director del departamento de Contabilidad y Finanzas, está realizando un curso de actualización de conocimientos para los profesores de la asignatura de Contabilidad y Finanzas. El curso se está realizando en el aula de informática del departamento de Contabilidad y Finanzas.





RESEARCH PEOPLE

BY JANE BIRCHALL

Laura M. Childs is a mathematician who has spent the last few years of her life in the mountains of Colorado.

She is a professor at the University of Colorado Boulder, where she has been working for the last 15 years. She is also a member of the National Academy of Sciences, the American Mathematical Society, and the Society for Mathematical Biology.

Childs is interested in the mathematics of pattern formation, and in particular the way that patterns of cells and tissues form in the developing embryo. She is also interested in the mathematics of the immune system, and in particular the way that the immune system responds to infection.

Childs is a member of the National Academy of Sciences, the American Mathematical Society, and the Society for Mathematical Biology. She is also a member of the National Science Foundation, the National Institutes of Health, and the National Cancer Institute.

Childs is a member of the National Academy of Sciences, the American Mathematical Society, and the Society for Mathematical Biology. She is also a member of the National Science Foundation, the National Institutes of Health, and the National Cancer Institute.



Childs is a member of the National Academy of Sciences, the American Mathematical Society, and the Society for Mathematical Biology. She is also a member of the National Science Foundation, the National Institutes of Health, and the National Cancer Institute.

Childs is a member of the National Academy of Sciences, the American Mathematical Society, and the Society for Mathematical Biology. She is also a member of the National Science Foundation, the National Institutes of Health, and the National Cancer Institute.

Childs is a member of the National Academy of Sciences, the American Mathematical Society, and the Society for Mathematical Biology. She is also a member of the National Science Foundation, the National Institutes of Health, and the National Cancer Institute.

Childs is a member of the National Academy of Sciences, the American Mathematical Society, and the Society for Mathematical Biology. She is also a member of the National Science Foundation, the National Institutes of Health, and the National Cancer Institute.

RESEARCH PEOPLE

BY JANE BIRCHALL

Alexander J. Cook is a mathematician who has spent the last few years of his life in the mountains of Colorado. He is a professor at the University of Colorado Boulder, where he has been working for the last 15 years. He is also a member of the National Academy of Sciences, the American Mathematical Society, and the Society for Mathematical Biology.

Cook is interested in the mathematics of pattern formation, and in particular the way that patterns of cells and tissues form in the developing embryo. He is also interested in the mathematics of the immune system, and in particular the way that the immune system responds to infection.

Cook is a member of the National Academy of Sciences, the American Mathematical Society, and the Society for Mathematical Biology. He is also a member of the National Science Foundation, the National Institutes of Health, and the National Cancer Institute.

Cook is a member of the National Academy of Sciences, the American Mathematical Society, and the Society for Mathematical Biology. He is also a member of the National Science Foundation, the National Institutes of Health, and the National Cancer Institute.



Cook is a member of the National Academy of Sciences, the American Mathematical Society, and the Society for Mathematical Biology. He is also a member of the National Science Foundation, the National Institutes of Health, and the National Cancer Institute.

Cook is a member of the National Academy of Sciences, the American Mathematical Society, and the Society for Mathematical Biology. He is also a member of the National Science Foundation, the National Institutes of Health, and the National Cancer Institute.



RESEARCH: ESTABLISHING THE LINKS

During the COVID-19 pandemic, researchers have been working hard to understand how the virus spreads and how to stop it. One of the key questions is whether people can catch the virus from their pets, like dogs and cats.

Scientists have been studying the genetic material of the virus in both humans and animals. This has helped them to see if the virus in pets is the same as the virus in people.

So far, the evidence suggests that it is very unlikely for people to catch COVID-19 from their pets. However, there are still some questions that need to be answered. For example, how long can the virus survive on a pet's fur or in their saliva?

Researchers are also looking at how pets might spread the virus to other animals. This is important because some animals, like pigs and birds, can catch the virus and then spread it to other animals.

It is also important to know how long the virus can survive on surfaces like tables and chairs.

Scientists are using special equipment to study the virus in the lab. They are also using computer models to see how the virus might spread in different situations. This helps them to understand the risks better.

Overall, the research shows that the risk of catching COVID-19 from a pet is very low. However, it is still important to take good hygiene practices, like washing your hands, to keep yourself safe.

As more research is done, we will learn more about the virus and how to prevent it. This will help us to keep ourselves and our pets safe during the pandemic.





DR. MARCEL DOMINGOS SANTOS DEPARTMENT OF CHEMISTRY

Dr. Marcel Domingos Santos is an Associate Professor in the Department of Chemistry, University of the Philippines - Diliman. He received his Ph.D. in Chemistry from the University of the Philippines - Diliman in 2008.

His research interests are in the synthesis and characterization of novel materials, particularly in the field of nanotechnology and materials science. He has published several papers in international journals and has participated in various international conferences.

Dr. Santos is also involved in teaching and mentoring students. He has supervised several Master's and Doctoral theses. He is currently a member of the Department of Chemistry, University of the Philippines - Diliman, and is actively engaged in research and academic activities.

He can be reached at marcel.santos@up.edu.ph or by phone at (632) 8634-1000.

Dr. Santos is also a member of the Philippine Chemical Society and the American Chemical Society. He has been awarded several research grants and awards for his contributions to the field of chemistry.



He is currently working on projects related to the synthesis and characterization of novel materials, particularly in the field of nanotechnology and materials science.

Dr. Santos is also involved in teaching and mentoring students. He has supervised several Master's and Doctoral theses. He is currently a member of the Department of Chemistry, University of the Philippines - Diliman, and is actively engaged in research and academic activities.

He can be reached at marcel.santos@up.edu.ph or by phone at (632) 8634-1000.





L... (faded text)

... (faded text)

... (faded text)

... (faded text)

... (faded text)



... (faded text)

... (faded text)

... (faded text)



ELETTORATO
ELETTORE
ELETTORE

LA
LA
LA

LA
LA
LA

LA
LA
LA

LA
LA
LA

LA
LA
LA

LA
LA
LA

LA
LA
LA



LA
LA
LA

LA
LA
LA

LA
LA
LA

LA
LA
LA

LA
LA
LA

LA
LA
LA



INICIACIÓN DE LAS ACTIVIDADES COMUNITARIAS EN EL GOBIERNO





HOSPITALS + INSTITUTIONS



National Institute of Health
NIH

NIH
National Institute of Health
NIH



PROGRAMA DE ACTIVIDADES DEL CENTRO COMUNITARIO DE LENGUA DE INGLÉS DEL INSTITUTO VUKOVIĆ

OBJETIVOS GENERALES

El alumno/a será capaz de:
- comprender y utilizar el lenguaje escrito en situaciones de comunicación;
- comprender y utilizar el lenguaje hablado en situaciones de comunicación;

- comprender y utilizar el lenguaje escrito en situaciones de comunicación;
- comprender y utilizar el lenguaje hablado en situaciones de comunicación;

- comprender y utilizar el lenguaje escrito en situaciones de comunicación;
- comprender y utilizar el lenguaje hablado en situaciones de comunicación;

CONTENIDOS DE LENGUA INGLÉS

El alumno/a será capaz de:
- comprender y utilizar el lenguaje escrito en situaciones de comunicación;
- comprender y utilizar el lenguaje hablado en situaciones de comunicación;

- comprender y utilizar el lenguaje escrito en situaciones de comunicación;
- comprender y utilizar el lenguaje hablado en situaciones de comunicación;

- comprender y utilizar el lenguaje escrito en situaciones de comunicación;
- comprender y utilizar el lenguaje hablado en situaciones de comunicación;

- comprender y utilizar el lenguaje escrito en situaciones de comunicación;
- comprender y utilizar el lenguaje hablado en situaciones de comunicación;

- comprender y utilizar el lenguaje escrito en situaciones de comunicación;
- comprender y utilizar el lenguaje hablado en situaciones de comunicación;

- comprender y utilizar el lenguaje escrito en situaciones de comunicación;
- comprender y utilizar el lenguaje hablado en situaciones de comunicación;

- comprender y utilizar el lenguaje escrito en situaciones de comunicación;
- comprender y utilizar el lenguaje hablado en situaciones de comunicación;

CONTENIDOS DE LENGUA INGLÉS

El alumno/a será capaz de:
- comprender y utilizar el lenguaje escrito en situaciones de comunicación;
- comprender y utilizar el lenguaje hablado en situaciones de comunicación;

- comprender y utilizar el lenguaje escrito en situaciones de comunicación;
- comprender y utilizar el lenguaje hablado en situaciones de comunicación;

- comprender y utilizar el lenguaje escrito en situaciones de comunicación;
- comprender y utilizar el lenguaje hablado en situaciones de comunicación;

- comprender y utilizar el lenguaje escrito en situaciones de comunicación;
- comprender y utilizar el lenguaje hablado en situaciones de comunicación;



UNIVERSITY OF THE PACIFIC

UNIVERSITY OF THE PACIFIC
OFFICE OF THE CHANCELLOR
100 UNIVERSITY AVENUE
PACIFIC GROVE, CA 93950
TEL: (805) 437-2000
WWW.PACIFIC.EDU

UNIVERSITY OF THE PACIFIC
OFFICE OF THE CHANCELLOR
100 UNIVERSITY AVENUE
PACIFIC GROVE, CA 93950
TEL: (805) 437-2000
WWW.PACIFIC.EDU



UNIVERSITY OF THE PACIFIC
OFFICE OF THE CHANCELLOR
100 UNIVERSITY AVENUE
PACIFIC GROVE, CA 93950
TEL: (805) 437-2000
WWW.PACIFIC.EDU

UNIVERSITY OF THE PACIFIC
OFFICE OF THE CHANCELLOR
100 UNIVERSITY AVENUE
PACIFIC GROVE, CA 93950
TEL: (805) 437-2000
WWW.PACIFIC.EDU

UNIVERSITY OF THE PACIFIC
OFFICE OF THE CHANCELLOR
100 UNIVERSITY AVENUE
PACIFIC GROVE, CA 93950
TEL: (805) 437-2000
WWW.PACIFIC.EDU

UNIVERSITY OF THE PACIFIC
OFFICE OF THE CHANCELLOR
100 UNIVERSITY AVENUE
PACIFIC GROVE, CA 93950
TEL: (805) 437-2000
WWW.PACIFIC.EDU





Centro de Relación en Historia

Investigación y docencia

Tanto el Centro de Relación en Historia como el Centro de Relación en Filosofía y Letras, se encuentran en el primer piso del edificio de la Facultad de Filosofía y Letras, en la calle 10 de Agosto, número 1000, de la ciudad de Panamá.

El Centro de Relación en Historia tiene como objetivo principal promover la investigación y la docencia en el área de la Historia, a través de la realización de cursos, talleres, conferencias y seminarios.

El Centro de Relación en Filosofía y Letras tiene como objetivo principal promover la investigación y la docencia en el área de la Filosofía y Letras, a través de la realización de cursos, talleres, conferencias y seminarios.

El Centro de Relación en Filosofía y Letras tiene como objetivo principal promover la investigación y la docencia en el área de la Filosofía y Letras, a través de la realización de cursos, talleres, conferencias y seminarios.

El Centro de Relación en Filosofía y Letras tiene como objetivo principal promover la investigación y la docencia en el área de la Filosofía y Letras, a través de la realización de cursos, talleres, conferencias y seminarios.

El Centro de Relación en Filosofía y Letras tiene como objetivo principal promover la investigación y la docencia en el área de la Filosofía y Letras, a través de la realización de cursos, talleres, conferencias y seminarios.

El Centro de Relación en Filosofía y Letras tiene como objetivo principal promover la investigación y la docencia en el área de la Filosofía y Letras, a través de la realización de cursos, talleres, conferencias y seminarios.

El Centro de Relación en Filosofía y Letras tiene como objetivo principal promover la investigación y la docencia en el área de la Filosofía y Letras, a través de la realización de cursos, talleres, conferencias y seminarios.

El Centro de Relación en Filosofía y Letras tiene como objetivo principal promover la investigación y la docencia en el área de la Filosofía y Letras, a través de la realización de cursos, talleres, conferencias y seminarios.

El Centro de Relación en Filosofía y Letras tiene como objetivo principal promover la investigación y la docencia en el área de la Filosofía y Letras, a través de la realización de cursos, talleres, conferencias y seminarios.

El Centro de Relación en Filosofía y Letras tiene como objetivo principal promover la investigación y la docencia en el área de la Filosofía y Letras, a través de la realización de cursos, talleres, conferencias y seminarios.

El Centro de Relación en Filosofía y Letras tiene como objetivo principal promover la investigación y la docencia en el área de la Filosofía y Letras, a través de la realización de cursos, talleres, conferencias y seminarios.

El Centro de Relación en Filosofía y Letras tiene como objetivo principal promover la investigación y la docencia en el área de la Filosofía y Letras, a través de la realización de cursos, talleres, conferencias y seminarios.

El Centro de Relación en Filosofía y Letras tiene como objetivo principal promover la investigación y la docencia en el área de la Filosofía y Letras, a través de la realización de cursos, talleres, conferencias y seminarios.

El Centro de Relación en Filosofía y Letras tiene como objetivo principal promover la investigación y la docencia en el área de la Filosofía y Letras, a través de la realización de cursos, talleres, conferencias y seminarios.





A lo largo de la historia, el mundo ha experimentado cambios profundos en su estructura económica y social. Desde la era premoderna hasta la actualidad, se han dado procesos de transformación que han dado lugar a diferentes etapas de desarrollo. Estos cambios han sido impulsados por factores como el avance tecnológico, el comercio internacional y la evolución de las instituciones políticas y económicas.

En el contexto del desarrollo humano, se ha observado una clara tendencia hacia la globalización y la interdependencia. Esto ha permitido que los países desarrollados y los países en desarrollo interactúen de manera cada vez más estrecha, generando oportunidades tanto para el crecimiento económico como para el bienestar social.

Sin embargo, esta transición no ha sido homogénea. Existen grandes disparidades en el nivel de desarrollo entre diferentes regiones y países. Esto ha generado debates sobre cómo promover un desarrollo más equitativo y sostenible, considerando tanto las necesidades económicas como las ambientales y sociales.

En conclusión, la transición del desarrollo es un proceso complejo y dinámico que requiere de políticas adecuadas y cooperación internacional. El objetivo principal es lograr un crecimiento económico que beneficie a toda la población, promoviendo la sostenibilidad y el bienestar en todas las dimensiones de la vida humana.

Este proceso de transición implica cambios estructurales en la economía, la sociedad y la cultura. Los países en desarrollo deben aprovechar las oportunidades que ofrece la globalización, pero también deben enfrentar los desafíos que conlleva, como la desigualdad y la degradación ambiental.

La educación juega un papel fundamental en esta transición, ya que es el principal motor del desarrollo humano. Al mejorar el nivel educativo de la población, se fomenta la innovación, el emprendimiento y la capacidad de adaptación a los cambios del mundo globalizado.

Además, es esencial promover la sostenibilidad en todas las actividades económicas y sociales. Esto implica utilizar los recursos naturales de manera responsable y garantizar que las futuras generaciones tengan acceso a un planeta saludable y próspero.

En resumen, la transición del desarrollo es un camino largo y desafiante, pero con la voluntad política y la cooperación internacional, es posible lograr un mundo más justo, equitativo y sostenible. El desarrollo humano debe ser el eje central de todas las políticas y acciones que se tomen.

El futuro del mundo depende de las decisiones que tomemos hoy. Debemos comprometernos a trabajar juntos para superar los obstáculos y construir un futuro compartido que beneficie a todos los seres humanos.

La transición del desarrollo no es un fin en sí mismo, sino un medio para alcanzar un mundo mejor. Debemos mantenernos comprometidos con los valores de justicia, equidad y sostenibilidad que guían nuestro camino.

En última instancia, el éxito de esta transición dependerá de nuestra capacidad para trabajar juntos y superar los intereses particulares en beneficio del bien común. Solo así podremos lograr un mundo verdaderamente próspero y sostenible.



THE UNIVERSITY OF THE PACIFIC

1000 UNIVERSITY AVENUE, PACIFIC GROVE, CA 93950

The University of the Pacific is a private, non-profit, Christian university. We are a member of the Association of Christian Colleges and Universities (ACCU). We are a member of the Association of American Universities (AAU). We are a member of the Association of Public and Socially Progressive Universities (APSU). We are a member of the Association of Public Theological Schools (APTS). We are a member of the Association of Theological Schools (ATS).

1000 UNIVERSITY AVENUE, PACIFIC GROVE, CA 93950

1000 UNIVERSITY AVENUE, PACIFIC GROVE, CA 93950



1000 UNIVERSITY AVENUE, PACIFIC GROVE, CA 93950

1000 UNIVERSITY AVENUE, PACIFIC GROVE, CA 93950



1000 UNIVERSITY AVENUE, PACIFIC GROVE, CA 93950

1000 UNIVERSITY AVENUE, PACIFIC GROVE, CA 93950

1000 UNIVERSITY AVENUE, PACIFIC GROVE, CA 93950





EL COMITÉ DE LA COMISIÓN DE INVESTIGACIÓN DE LA UNIVERSIDAD DE LA PAZ

BOGOTÁ, 2018

Tanto el estudio de la historia y la cultura de la Universidad de la Paz, como el de la vida y el pensamiento de sus protagonistas, son fundamentales para comprender el presente y el futuro de la institución.

EL COMITÉ DE LA COMISIÓN DE INVESTIGACIÓN DE LA UNIVERSIDAD DE LA PAZ

Este comité tiene como objetivo principal promover y coordinar las actividades de investigación que se desarrollan en la Universidad de la Paz, así como fomentar la colaboración entre los investigadores de diferentes disciplinas.



El comité está integrado por representantes de las diferentes facultades y departamentos de la Universidad de la Paz, y su trabajo se desarrolla de manera conjunta y coordinada.

Este comité es un espacio de encuentro y diálogo para los investigadores de la Universidad de la Paz, y su trabajo es fundamental para el desarrollo de la investigación en la institución.



Figura 1. Un ave negra posada en un árbol.

Este comité tiene como objetivo principal promover y coordinar las actividades de investigación que se desarrollan en la Universidad de la Paz, así como fomentar la colaboración entre los investigadores de diferentes disciplinas.

El comité está integrado por representantes de las diferentes facultades y departamentos de la Universidad de la Paz, y su trabajo se desarrolla de manera conjunta y coordinada.

EL COMITÉ DE LA COMISIÓN DE INVESTIGACIÓN DE LA UNIVERSIDAD DE LA PAZ



Figura 2. Un ave negra posada en un árbol.



THE BIBLE CHALLENGE

BY CHRISTOPHER W. SMITH, UNIVERSITY OF THE PACIFIC
AND
DANIEL J. HARRIS, UNIVERSITY OF THE PACIFIC

© 2004 by the University of the Pacific. All rights reserved.

Like any other major world religion, the Bible has a long and rich history. It is a collection of books that have been written, translated, and interpreted over the centuries. The Bible is a complex and multifaceted work that has shaped the lives of billions of people. It is a source of inspiration, guidance, and comfort for many. The Bible is a book that has stood the test of time and continues to be relevant and meaningful to people today.

The Bible is a collection of books that have been written, translated, and interpreted over the centuries. It is a complex and multifaceted work that has shaped the lives of billions of people. The Bible is a source of inspiration, guidance, and comfort for many. The Bible is a book that has stood the test of time and continues to be relevant and meaningful to people today.

The Bible is a collection of books that have been written, translated, and interpreted over the centuries. It is a complex and multifaceted work that has shaped the lives of billions of people. The Bible is a source of inspiration, guidance, and comfort for many. The Bible is a book that has stood the test of time and continues to be relevant and meaningful to people today.

The Bible is a collection of books that have been written, translated, and interpreted over the centuries. It is a complex and multifaceted work that has shaped the lives of billions of people. The Bible is a source of inspiration, guidance, and comfort for many. The Bible is a book that has stood the test of time and continues to be relevant and meaningful to people today.

The Bible is a collection of books that have been written, translated, and interpreted over the centuries. It is a complex and multifaceted work that has shaped the lives of billions of people. The Bible is a source of inspiration, guidance, and comfort for many. The Bible is a book that has stood the test of time and continues to be relevant and meaningful to people today.

The Bible is a collection of books that have been written, translated, and interpreted over the centuries. It is a complex and multifaceted work that has shaped the lives of billions of people. The Bible is a source of inspiration, guidance, and comfort for many. The Bible is a book that has stood the test of time and continues to be relevant and meaningful to people today.

The Bible is a collection of books that have been written, translated, and interpreted over the centuries. It is a complex and multifaceted work that has shaped the lives of billions of people. The Bible is a source of inspiration, guidance, and comfort for many. The Bible is a book that has stood the test of time and continues to be relevant and meaningful to people today.

The Bible is a collection of books that have been written, translated, and interpreted over the centuries. It is a complex and multifaceted work that has shaped the lives of billions of people. The Bible is a source of inspiration, guidance, and comfort for many. The Bible is a book that has stood the test of time and continues to be relevant and meaningful to people today.

The Bible is a collection of books that have been written, translated, and interpreted over the centuries. It is a complex and multifaceted work that has shaped the lives of billions of people. The Bible is a source of inspiration, guidance, and comfort for many. The Bible is a book that has stood the test of time and continues to be relevant and meaningful to people today.



THE UNIVERSITY OF THE PACIFIC IS COMING TO YOUR COMMUNITY

THE UNIVERSITY OF THE PACIFIC
IS COMING TO YOUR COMMUNITY

THE UNIVERSITY OF THE PACIFIC
IS COMING TO YOUR COMMUNITY

THE UNIVERSITY OF THE PACIFIC

The University of the Pacific is a private, non-profit, Christian university with a long history of providing quality education and service to the community. We are now expanding our reach to new areas, bringing the benefits of our education and service to you. Our programs are designed to meet the needs of the community, and we are committed to providing a high-quality education that prepares students for the challenges of the future.

Our programs are designed to meet the needs of the community, and we are committed to providing a high-quality education that prepares students for the challenges of the future. We offer a wide range of undergraduate and graduate programs, including business, education, health care, and liberal arts. Our faculty is made up of experienced professionals who are dedicated to providing the best possible education for our students.

Our programs are designed to meet the needs of the community, and we are committed to providing a high-quality education that prepares students for the challenges of the future. We offer a wide range of undergraduate and graduate programs, including business, education, health care, and liberal arts. Our faculty is made up of experienced professionals who are dedicated to providing the best possible education for our students.

Our programs are designed to meet the needs of the community, and we are committed to providing a high-quality education that prepares students for the challenges of the future. We offer a wide range of undergraduate and graduate programs, including business, education, health care, and liberal arts. Our faculty is made up of experienced professionals who are dedicated to providing the best possible education for our students.

THE UNIVERSITY OF THE PACIFIC

The University of the Pacific is a private, non-profit, Christian university with a long history of providing quality education and service to the community. We are now expanding our reach to new areas, bringing the benefits of our education and service to you. Our programs are designed to meet the needs of the community, and we are committed to providing a high-quality education that prepares students for the challenges of the future.

Our programs are designed to meet the needs of the community, and we are committed to providing a high-quality education that prepares students for the challenges of the future. We offer a wide range of undergraduate and graduate programs, including business, education, health care, and liberal arts. Our faculty is made up of experienced professionals who are dedicated to providing the best possible education for our students.



The first graph shows the distribution of the number of successes in a binomial distribution with $n=10$ trials and $p=0.5$. The distribution is symmetric and bell-shaped, centered at 5 successes. The x-axis is labeled 'Number of successes' and ranges from 0 to 10. The y-axis is labeled 'Probability' and ranges from 0 to 0.1. The bars are colored in a gradient from blue to red.

The second graph shows the distribution of the number of successes in a binomial distribution with $n=10$ trials and $p=0.2$. The distribution is skewed to the right, with a peak at 2 successes. The x-axis is labeled 'Number of successes' and ranges from 0 to 10. The y-axis is labeled 'Probability' and ranges from 0 to 0.1. The bars are colored in a gradient from blue to red.

Number of successes	Probability
0	0.0010
1	0.0107
2	0.0547
3	0.1771
4	0.3770
5	0.6230
6	0.3771
7	0.1771
8	0.0547
9	0.0107
10	0.0010

The third graph shows the distribution of the number of successes in a binomial distribution with $n=10$ trials and $p=0.8$. The distribution is skewed to the left, with a peak at 8 successes. The x-axis is labeled 'Number of successes' and ranges from 0 to 10. The y-axis is labeled 'Probability' and ranges from 0 to 0.1. The bars are colored in a gradient from blue to red.

The fourth graph shows the distribution of the number of successes in a binomial distribution with $n=10$ trials and $p=0.5$. The distribution is symmetric and bell-shaped, centered at 5 successes. The x-axis is labeled 'Number of successes' and ranges from 0 to 10. The y-axis is labeled 'Probability' and ranges from 0 to 0.1. The bars are colored in a gradient from blue to red.



The fifth graph shows the distribution of the number of successes in a binomial distribution with $n=10$ trials and $p=0.2$. The distribution is skewed to the right, with a peak at 2 successes. The x-axis is labeled 'Number of successes' and ranges from 0 to 10. The y-axis is labeled 'Probability' and ranges from 0 to 0.1. The bars are colored in a gradient from blue to red.



1. The first part of the text discusses the importance of maintaining accurate records in a laboratory setting. It emphasizes the need for detailed documentation of all procedures, reagents, and results to ensure the reliability and reproducibility of the data.

2. The second part of the text describes the various methods used for data collection and analysis. It highlights the use of specialized equipment and software to measure and interpret the experimental results, ensuring that the data is both precise and accurate.

3. The final part of the text discusses the importance of regular calibration and validation of the equipment used in the laboratory. It stresses that this is a critical step in ensuring the long-term accuracy and reliability of the experimental results.

4. The text also mentions the importance of safety protocols in the laboratory, particularly when handling hazardous materials. It outlines the necessary precautions and procedures to minimize the risk of accidents and ensure the safety of all personnel involved in the research.

5. Finally, the text concludes by emphasizing the importance of collaboration and communication among laboratory staff. It notes that sharing information and resources is essential for the success of any scientific project.



Figure 1: A small, colorful bird perched on a wooden stump.



REKREASYONEL VEYA GELİŞTİRİCİ VEYLA SPORUN FAYDALARI KONUSUNDA FİZİKSEL EĞİTİMİN ROLÜ







Engineering Management

The Faculty of Engineering at the Technical University of Munich (TUM) is a leading institution in the field of engineering and technology. It offers a wide range of programs and research opportunities for students and researchers alike.

Our programs are designed to provide students with a strong foundation in engineering and management, preparing them for the challenges of the modern industry.

We are committed to excellence in education and research, and we strive to provide our students with the best possible learning experience.

Our faculty members are experts in their respective fields, and they bring their extensive experience and knowledge to the classroom. We also offer a variety of extracurricular activities and opportunities for students to gain practical experience.

At the Faculty of Engineering, we are dedicated to providing our students with the skills and knowledge they need to succeed in their careers. We are proud to be part of the TUM community and to contribute to the advancement of engineering and technology.

For more information about our programs and research opportunities, please visit our website or contact us directly. We look forward to welcoming you to the Faculty of Engineering at TUM.

The Faculty of Engineering at TUM is a leading institution in the field of engineering and technology. It offers a wide range of programs and research opportunities for students and researchers alike. Our programs are designed to provide students with a strong foundation in engineering and management, preparing them for the challenges of the modern industry. We are committed to excellence in education and research, and we strive to provide our students with the best possible learning experience. Our faculty members are experts in their respective fields, and they bring their extensive experience and knowledge to the classroom. We also offer a variety of extracurricular activities and opportunities for students to gain practical experience. At the Faculty of Engineering, we are dedicated to providing our students with the skills and knowledge they need to succeed in their careers. We are proud to be part of the TUM community and to contribute to the advancement of engineering and technology. For more information about our programs and research opportunities, please visit our website or contact us directly. We look forward to welcoming you to the Faculty of Engineering at TUM.



The Faculty of Engineering at TUM is a leading institution in the field of engineering and technology. It offers a wide range of programs and research opportunities for students and researchers alike. Our programs are designed to provide students with a strong foundation in engineering and management, preparing them for the challenges of the modern industry. We are committed to excellence in education and research, and we strive to provide our students with the best possible learning experience. Our faculty members are experts in their respective fields, and they bring their extensive experience and knowledge to the classroom. We also offer a variety of extracurricular activities and opportunities for students to gain practical experience. At the Faculty of Engineering, we are dedicated to providing our students with the skills and knowledge they need to succeed in their careers. We are proud to be part of the TUM community and to contribute to the advancement of engineering and technology. For more information about our programs and research opportunities, please visit our website or contact us directly. We look forward to welcoming you to the Faculty of Engineering at TUM.

The Faculty of Engineering at TUM is a leading institution in the field of engineering and technology. It offers a wide range of programs and research opportunities for students and researchers alike. Our programs are designed to provide students with a strong foundation in engineering and management, preparing them for the challenges of the modern industry. We are committed to excellence in education and research, and we strive to provide our students with the best possible learning experience. Our faculty members are experts in their respective fields, and they bring their extensive experience and knowledge to the classroom. We also offer a variety of extracurricular activities and opportunities for students to gain practical experience. At the Faculty of Engineering, we are dedicated to providing our students with the skills and knowledge they need to succeed in their careers. We are proud to be part of the TUM community and to contribute to the advancement of engineering and technology. For more information about our programs and research opportunities, please visit our website or contact us directly. We look forward to welcoming you to the Faculty of Engineering at TUM.

The Faculty of Engineering at TUM is a leading institution in the field of engineering and technology. It offers a wide range of programs and research opportunities for students and researchers alike. Our programs are designed to provide students with a strong foundation in engineering and management, preparing them for the challenges of the modern industry. We are committed to excellence in education and research, and we strive to provide our students with the best possible learning experience. Our faculty members are experts in their respective fields, and they bring their extensive experience and knowledge to the classroom. We also offer a variety of extracurricular activities and opportunities for students to gain practical experience. At the Faculty of Engineering, we are dedicated to providing our students with the skills and knowledge they need to succeed in their careers. We are proud to be part of the TUM community and to contribute to the advancement of engineering and technology. For more information about our programs and research opportunities, please visit our website or contact us directly. We look forward to welcoming you to the Faculty of Engineering at TUM.

For more information, please visit our website or contact us directly.



Understanding the complex interactions between the brain and the environment is a central theme in the research of the **Centre for Brain Research**. This interdisciplinary group brings together experts from neuroscience, psychology, and medicine to explore how the brain processes information and how this is affected by various factors such as stress, diet, and social environment.

The **Centre for Brain Research** is a leading institution in the field of brain research, providing a supportive environment for researchers to conduct cutting-edge studies. The centre's research is focused on understanding the underlying mechanisms of brain function and how these are disrupted in various neurological and psychiatric conditions.

For more information about the Centre for Brain Research and the research groups within it, please visit our website at www.cam.ac.uk/brain-research.

The **Centre for Brain Research** is a leading institution in the field of brain research, providing a supportive environment for researchers to conduct cutting-edge studies. The centre's research is focused on understanding the underlying mechanisms of brain function and how these are disrupted in various neurological and psychiatric conditions.

For more information about the Centre for Brain Research and the research groups within it, please visit our website at www.cam.ac.uk/brain-research.

The **Centre for Brain Research** is a leading institution in the field of brain research, providing a supportive environment for researchers to conduct cutting-edge studies. The centre's research is focused on understanding the underlying mechanisms of brain function and how these are disrupted in various neurological and psychiatric conditions.

For more information about the Centre for Brain Research and the research groups within it, please visit our website at www.cam.ac.uk/brain-research.



Understanding the complex interactions between the brain and the environment is a central theme in the research of the **Centre for Brain Research**. This interdisciplinary group brings together experts from neuroscience, psychology, and medicine to explore how the brain processes information and how this is affected by various factors such as stress, diet, and social environment.

The **Centre for Brain Research** is a leading institution in the field of brain research, providing a supportive environment for researchers to conduct cutting-edge studies. The centre's research is focused on understanding the underlying mechanisms of brain function and how these are disrupted in various neurological and psychiatric conditions.

The **Centre for Brain Research** is a leading institution in the field of brain research, providing a supportive environment for researchers to conduct cutting-edge studies. The centre's research is focused on understanding the underlying mechanisms of brain function and how these are disrupted in various neurological and psychiatric conditions.

For more information about the Centre for Brain Research and the research groups within it, please visit our website at www.cam.ac.uk/brain-research.

The **Centre for Brain Research** is a leading institution in the field of brain research, providing a supportive environment for researchers to conduct cutting-edge studies. The centre's research is focused on understanding the underlying mechanisms of brain function and how these are disrupted in various neurological and psychiatric conditions.

For more information about the Centre for Brain Research and the research groups within it, please visit our website at www.cam.ac.uk/brain-research.

